

GROUND PREPARATION

The following information is intended primarily for the growing of Pachysandra. However, in general, all other plant material will succeed in these same conditions.

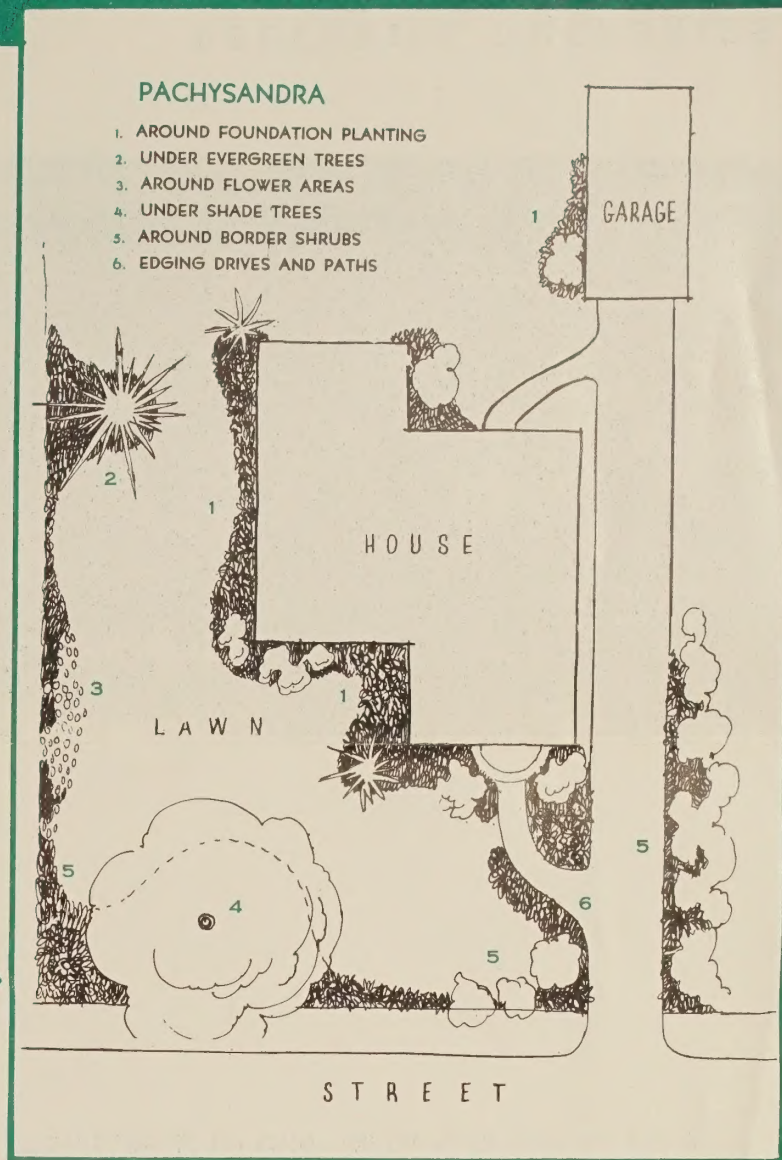
Preparatory to planting, loosen or pulverize the entire ground area. Enrich if needed, with decayed stable manure, decayed leaves or with peat moss which is usually carried in stock by local feed store or garden centers. Where roots from trees are close to the surface, such as under Maples, Lindens or Elms, cut these surface roots to 3 or 4 inches deep with a sharp grub-hoe, then add 3 to 4 inches of new topsoil as explained. In such well prepared areas the roots will spread quickly.

Most soils are suitable to the growing of Pachysandra and require no more work than digging the soil a few inches deep before the planting is done.

Your particular soil may not be poor, but if there is doubt, it is well to follow the ground preparation as outlined.

The first watering after planting should be thorough. One or two subsequent waterings the first season is beneficial but little or no watering should be required after the first growing season. **DO NOT RAKE AWAY THE FALLEN LEAVES FROM THE PLANTS IN THE FALL**, but allow them to gather among the plants. These leaves decay in time and form a good moisture retaining mulch—the secret for a successful growth of PACHYSANDRA.

This plan for the average size home grounds will serve as a guide in the use of GROUND COVER Plants. Pachysandra is the most effective but practically all the other types listed in this folder will do well on the average home grounds. You will no doubt find that Myrtle, Baltic Ivy and Euonymus will thrive just as well under these same conditions. It might be said that of all the GROUND COVER plants, the PACHYSANDRA might prove to be the most practical and longest lived of all. A minimum use of the other types can and will add just that much more interest to your planting.



GENERAL INFORMATION

CHARGE ORDERS ARE WELCOME

Unless you have been buying from us on a credit basis before, please furnish us with the names of any large department stores with whom you have a charge account. As a rule we would prefer not to carry an account smaller than \$10.00 and a limit of not more than \$200.00. This should be an advantage to some wishing to complete a larger planting in one season. Our regular terms are net 30 days but in special cases we shall be glad to extend this time limit.

We will be glad to make C.O.D. shipments when REQUESTED but the cost of C.O.D. fee and postage will be added.

The items in this list are intended for MAIL SALE only. We do not operate a cash and carry business. If you expect to call for plants, already on order, please advise us a few days in advance, and we shall be glad to have them ready for you.

All items in this folder will be sent prepaid. You will have no Express or other delivery costs to pay.

We make no charge for good packing and you can be sure your order will arrive in good condition.

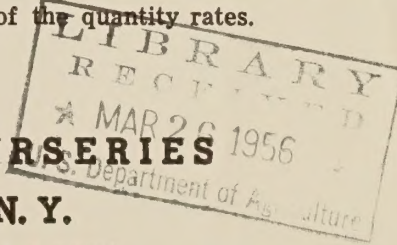
When plants are wanted for delivery on SPECIFIC DATES we will make every effort to make shipment on time.

If you wish to complete certain larger plantings in one season but you are unable to handle the entire quantity at once, we shall be glad to stagger shipments at certain intervals and yet enable you to take advantage of the quantity rates.

PEEKSKILL NURSERIES

Shrub Oak, N. Y.

Phone: LAkeland 8-5595



PEEKSKILL NURSERIES

SHRUB OAK, NEW YORK



A PACHYSANDRA Planting beneath a large old American Ash tree.

This area becomes extremely dry during the summer months but the dense growth of the Pachysandra indicates its determination to survive under such adverse conditions.

**GROUND
COVER
PLANTS**

PACHYSANDRA terminalis. Japanese Spurge.

An old time Ground Cover plant with versatile modern day use. Evergreen the year round, self sustaining and always looks well. Primarily does best in shade and moist ground, but once established, will grow in full sunny areas even with little moisture.

You can make your home grounds the talk of the neighborhood. Your foundation planting is not complete without PACHYSANDRA or Myrtle as a permanent evergreen cover.

REMEMBER - Once established, a Pachysandra planting will eliminate grass cutting and weeding. Your lawn work stops at the edge of the lawn.

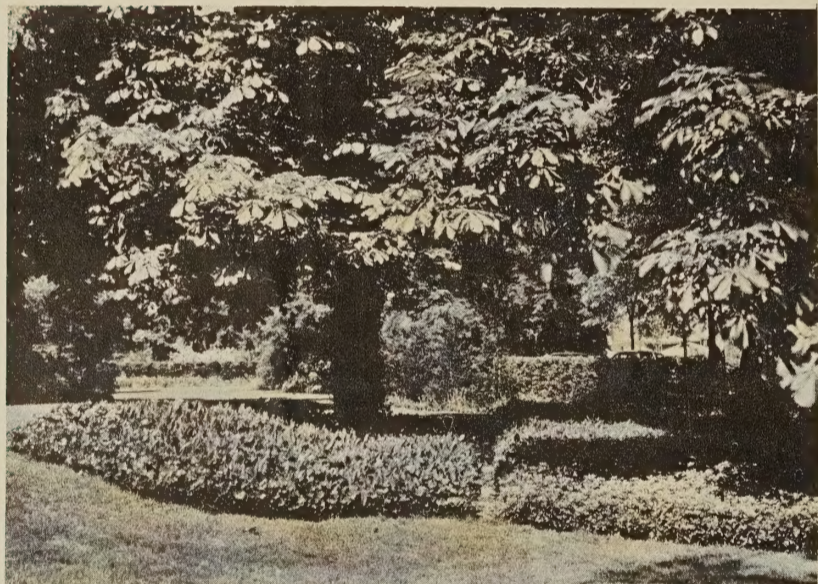
This plant is used extensively under large spreading trees, back of buildings or other situations too shady for grass to grow. Pachysandra will transform otherwise bare and ugly ground areas into attractive year round cover. Pachysandra is also very effective as a border plant along paths or driveway edging.

PACHYSANDRA grows at an even height of about 8 inches, giving a perfect flat top effect even for the largest areas. PACHYSANDRA WILL GROW IN SUNNY AREAS TOO, but develops deepest dark green color in part or fully shaded areas, where few other plants can succeed. PLANT ABOUT 6 inches apart. No other plant can give the complete satisfaction that PACHYSANDRA does. It has proven itself perfectly hardy in practically every section of the U. S. and Canada. You can plant most any time of the year, March thru December. Strong husky plants in outside soil frames:

25 for \$1.75; 50 for \$3.25; 100 for \$6.00; 1000 for \$50.00;
5000 or more shipped at same time, \$45.00 per M.



Just a gradual slope but Baltic Ivy does extremely well in this very sunny area. You can plant very steep banks with Baltic Ivy, Pachysandra, Myrtle, Euonymus and the Wichuriana Rose.



This photo shows a 2 year old planting of Lily of the Valley and Baltic Ivy on the left. This particular area is in full sunshine most of the day. On the right side is Pachysandra. The amount of moisture in this area is below normal but it shows how well these plants can do, once established.

EUONYMUS radicans colorata. Purpleleaf Winter Creeper.

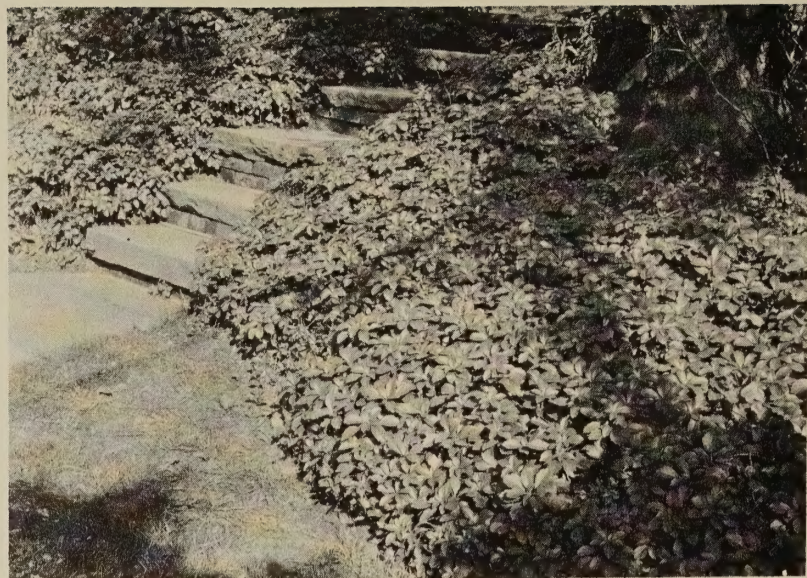
Unlike other Euonymus varieties, this type lays practically flat and forms a thick mat on the ground. One of the very best GROUND COVER plants. we have never seen it attacked by scales as most Euonymus is. The leaves are deep purple and paler beneath in Autumn and Winter. The stems produce rootlets and when planted near stone walls or other masonry, will cling. Trails on the ground to become a thick and Evergreen mat the year round. Very nice compact growth. Can be planted 8 to 12 inches apart. Strong 2 year field plants.

10 for \$3.50; 25 for \$7.50; 50 for \$12.50; 100 for \$19.50

LILY OF THE VALLEY. Convallaria.

A very permanent GROUND COVER plant for shady and partly shaded areas or woodland. The abundant fragrant flower spikes appear in May and June with attractive dark green foliage. Plants are prolific growers and develop a heavy thick growth quite rapidly. Ideal for mass planting.

25 for \$1.50; 100 for \$3.75; 500 for \$17.50; 1000 for \$32.50



A neat small Pachysandra planting in partially shaded area. About 200 plants used on both sides of steps. Myrtle will also do well under these same conditions.

BALTIC IVY—Hedera helix Baltica.

An extremely winter-hardy type of the common Evergreen English Ivy. Evergreen foliage. Baltic Ivy is excellent as a vine to climb and cling to stone or brick walls. Also as a ground cover in shaded areas as well as sunny areas. This plant does well also in window boxes and even does well as a vine indoors. Often used on cemetery plots as a low ground cover plant about 1½ feet apart.

Individually pot-grown plants from outdoor frames:

10 for \$2.85; 25 for \$6.00; 100 for \$22.00

MYRTLE. Old fashioned Periwinkle (Vinca minor)

This is also an excellent evergreen ground cover for shaded and semi-shaded areas. Dark green oval shaped foliage with conspicuous blue flowers in early spring. Plant about 12 inches apart.

Combines well with pachysandra if each kind is kept in large colonies, not mixed together. Grows almost flat on the ground. Myrtle like Pachysandra, likes fairly good soil.

Strong field plants:

10 for \$1.85; 25 for \$2.75; 100 for \$9.50; 1000 for \$75.00

